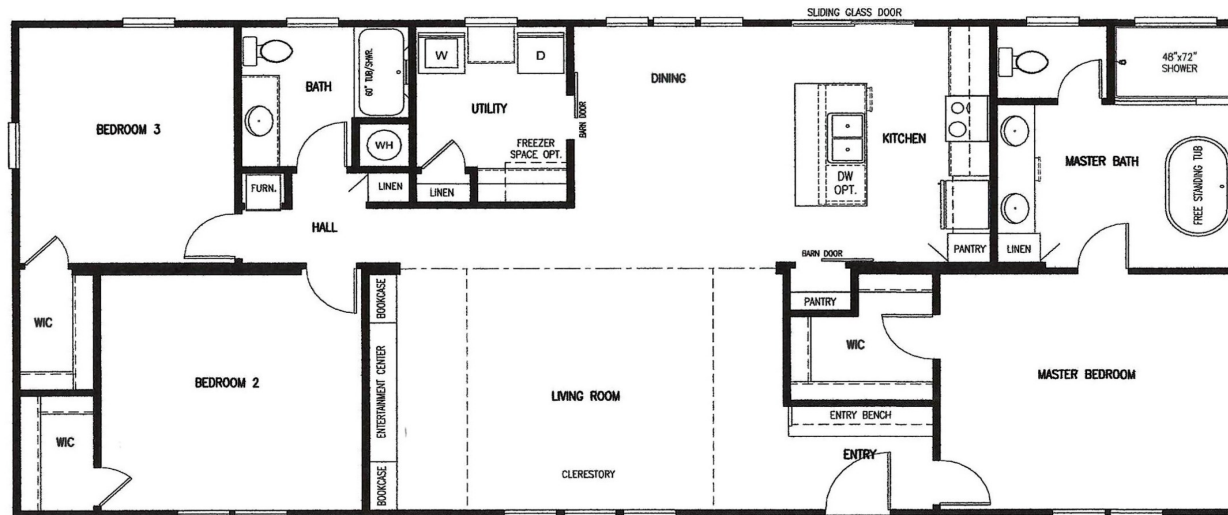




# THE "STEPHENS"

28' x 60' - 3 Bedroom / 2 Bathroom

[www.newvisionmfg.com](http://www.newvisionmfg.com)



## STANDARD FEATURES

- ◆ Metal Roof (R-Panel)
- ◆ 2X4 Interior & Exterior Walls
- ◆ Solid Wood Cabinet Doors/Drawers
- ◆ Smart Board Siding
- ◆ 22-11-28 Insulation
- ◆ Ceramic Lavatories
- ◆ 42" Overhead Cabinets
- ◆ Wired/Braced for Ceiling Fans
- ◆ USB Plugs (Kitchen, M. Bed, Utility)
- ◆ Thermal Pane Windows
- ◆ 8' Flat Textured Ceilings
- ◆ Elongated Toilets
- ◆ Heavy Duty I-Beam Frame
- ◆ Recessed LED Lighting
- ◆ Fiberglass Tubs/Showers
- ◆ Insulated Duct Work
- ◆ Entertainment Center w/Jack
- ◆ Ext. GFI Plugs (Front & Back)
- ◆ Stainless Steel Appliances (Side by Side, Smooth Top Range, Dishwasher, Microwave Vent-a-Hood)
- ◆ Stainless Steel Appliances
- ◆ 72" Acrylic/Duma Shower
- ◆ Lino Throughout
- ◆ Window Awnings
- ◆ Overhead Ducts
- ◆ AC Disconnect
- ◆ Clerestory

